



this issue

Results Success! **P.1**

FEBRUARY Geo Field Work **P.2**

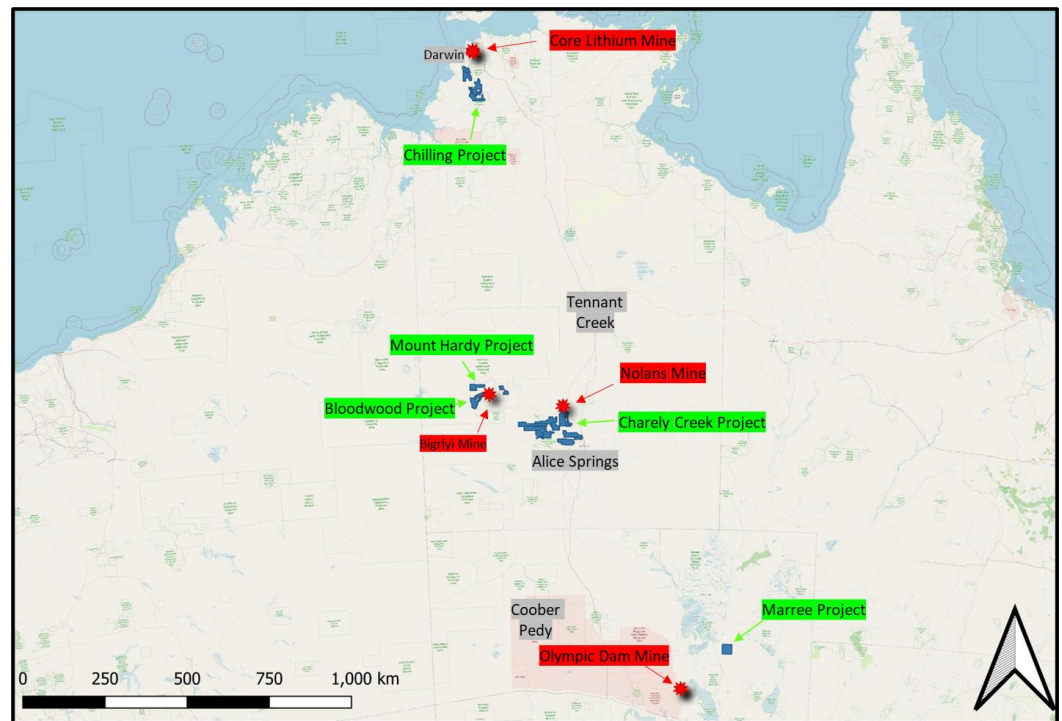
New Ground **P.2**

Uranium & Mining News **P.3**

SUMMARY

- 2022 results from Charley Creek & Bloodwood
- URO is instore for a HUGE 2023 with three trips planned for Charley Creek, two to Bloodwood and our maiden reconnaissance program to Chilling, south-west of Darwin
- URO secures an exciting new uranium prospect in South Australia
- EVs Uranium awareness increasing Downunder as Bill Gates sits down for a series of meetings with Anthony Albanese

2023 program to follow on from big 2022



Results Success!

October, November and December were spent processing the results collected from the Charley Creek and Bloodwood field programs and sending several samples to the lab for testing.

It's also been an active period of portfolio rationalisation, with new ground being pegged with Mount Hardy tenements near Bloodwood and new state entry into South Australia with the Marree tenement prospective for Uranium and Rare Earth Elements. See the map above for URO's new tenement position of over 13,000 km².

February Geological Field Work

From 27 February – 10 March 2023, URO directors Orr and Ferla, will complete a sampling program to confirm some of the results from the September 2022 program. The trip will use motorcycles to sample areas of the tenements that were largely inaccessible by 4WD during last year's program. The program will be focused around the highly encouraging REE and gold results collected last year.

New Ground

After Coffa's successful reconnaissance and sampling trip to the Bloodwood tenements in western NT, URO acquired two more tenements along Tanami Road. The Mt Hardy tenements are prospective for ionic clay rare earths.

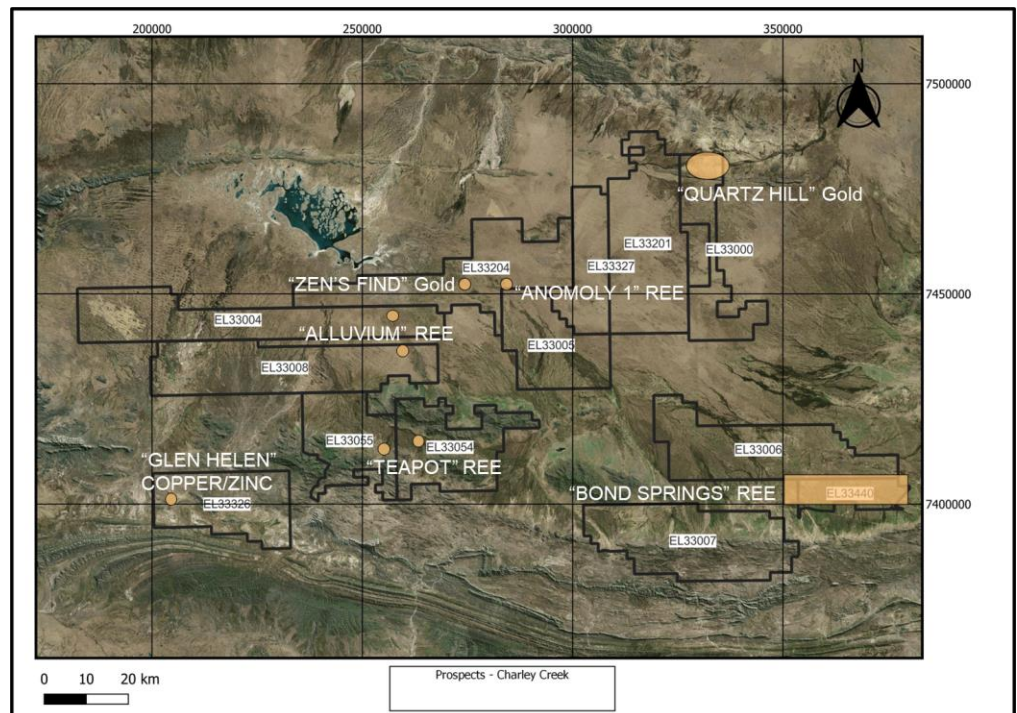
URO directors Coffa and Orr attended a major uranium summit in Adelaide in December. This resulted in the company making an application to secure an exciting new uranium prospect in SA near Marree north east of BHP's Olympic Dam IOCG mine. SA map with Marree title incl Olympic Dam/Coober Pedy.

Charley Creek

Over 1,000 alluvial samples were collected in all the Charley Creek tenements. 42 rock chip samples were also sent for analysis. We are pleased to report that several areas were identified as having anomalous levels of rare earth elements (REE) and require follow-up work. Total Rare Earth Oxides (TREO) of 200-900 ppm * were measured using handheld XRF in alluvium derived from the Teapot Granite to the south. One highly radioactive area measured 1,100 cps ^ of radioactivity and TREO measurements of over 4,500 ppm. To put this in perspective, the nearby Crosslands Nickel REE resource published an average TREO of 275 ppm. A high-resolution radiometric survey will further delineate uranium and rare earth prospects for the 2023 grid soil sampling and drilling programs.

A gold prospect was discovered along the Tanami Road, with several rock chip samples returning between 2-3 g/t # gold over a strike of 2.8 km. This is significant for surface sampling, in addition to the fact that the area is not known for economic gold mineralisation. Follow up work is required to further understand the controls on mineralisation. Grid soil sampling will further investigate the nature and extent of the gold mineralisation near the Tanami Road, specifically looking for subtle arsenic or mercury signatures. This will enhance targeting the shallow aircore holes directly into the surrounding soils.

Above background gold mineralisation of 0.12 g/t was also encountered in a quartz blow, north of the Hann Range. Although sub-economic, this result indicates that gold is present in the system and given there a numerous other quartz blows in the area that haven't been explored, further sampling of these is warranted. More surface sampling will be undertaken as soil sampling around known gold occurrences to determine if a footprint exists.



Map of Charley Creek tenements and current prospect areas, with main resource

Note:

- * ppm refers to parts-per-million and is a measure of the quantity of a mineral in a sample.
- ^ cps refers to the ionizing radiation reading in counts-per-second as a measure of radioactivity in the sample/area.
- # g/t refers to grams per tonne and is a common measure for gold.

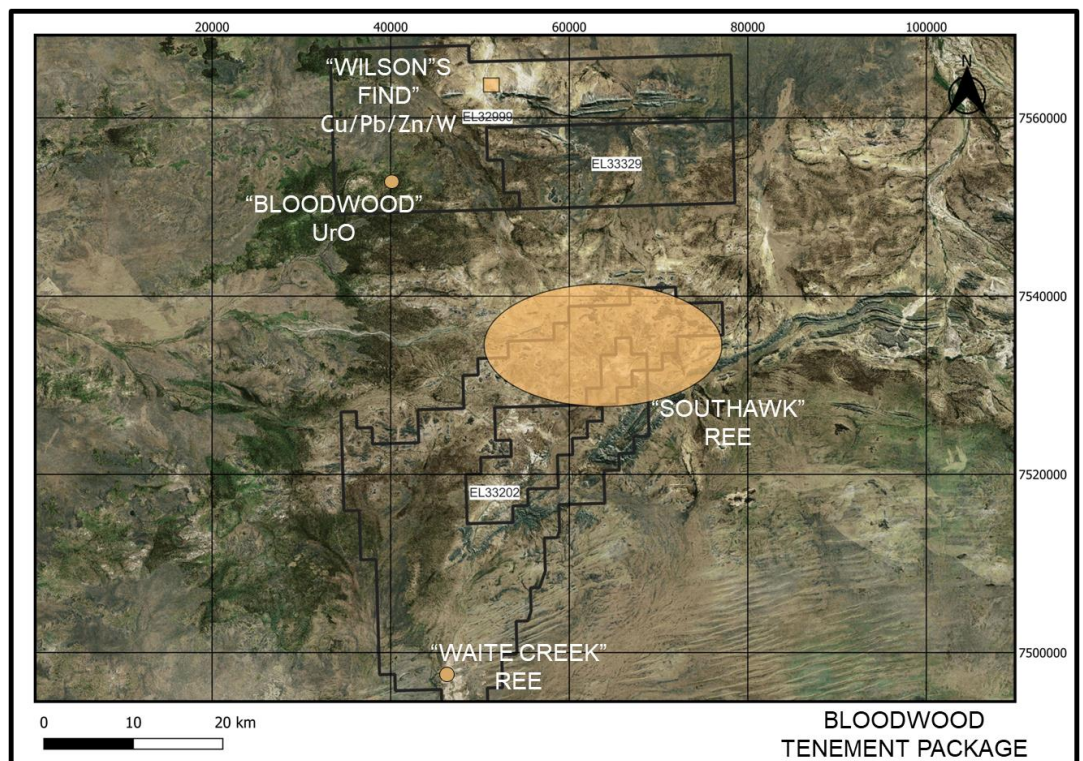


Uranium & Critical Mining News

- Japan takes the next step to restart its nuclear fleet [Click here](#)
- Canada wises up to the national security threat to critical minerals. [Click here](#)
- Bloomberg editorial leaves no doubt on its view on nuclear [Click here](#)
- Indonesia considers OPEC-style cartel for battery metals [Click here](#)
- Slippage issues are emerging with green hydrogen, compromising its viability [Click here](#)
- The nuclear renaissance continues to gain traction [Click here](#)
- Bill Gates has his say on Australia's nuclear stance. [Click here](#)
- And the Australian Government responds. [Click here](#)
- Oliver Stone's new documentary 'Nuclear' which premiered at the Venice Film Festival is doing its best to change hearts and minds. Find link to trailer [here](#)

Bloodwood

About 200 km west-northwest of Charley Creek, URO teamed up with our ASX-listed neighbour to collect rock chip and alluvial samples to analyse for uranium, REE and other energy transition resources, as well as conduct first pass reconnaissance exploration. Sixteen rock chip and soil samples were taken from known occurrences such as Wilson's Find, a quartz vein previously sampled by Tanami Gold and in the vicinity of radiometrically anomalous rocks in northern EL33202. Sample H13R1 taken from Wilson's Find returned an above detection grade of greater than 5% copper and 7,180ppm lead. This result is very encouraging and given that no modern drilling has been undertaken on the prospect, this presents as a significant opportunity to delineate an economic resource in the area. Samples at the Southhawk prospect from the northern part of EL33202 returned anomalous TREOs of >500 ppm. These results are incredibly promising, high priority exploration targets for URO. Wilson's Find will be systematically sampled for rock chips and soils in April. A soil sampling grid will also be designed to determine whether a geochemical signature is evident through the quaternary cover. The rare earth prospective outcrops and soils in EL33202 will also be systematically sampled, with possible aircore drilling in the soils to coincide with the Charley Creek campaign in July/August.



Map of Bloodwood tenements and current prospect areas, with main resources

Exchange Tower
Suite 707, 530 Little Collins Street
Melbourne VIC 3000
AUSTRALIA

+61 (3) 9690 1500 ph
+61 (3) 9690 1544 fax
www.urocorp.com.au