

ISSUE

22

MARCH
2026

NEWSLETTER FOR
URO CORPORATION

URO News

SUMMARY

- **2026 Planning:** URO will advance drill-ready West Arunta critical minerals projects toward IPO while building long-term exploration value.
- **Beryllia Assays:** assays confirm widespread, shallow high-grade tin and a vertically extensive fluorite-rich hydrothermal system with associated copper sulphides.
- **Columbia New Gravity:** defined structurally controlled dense intrusions, advancing carbonatite-focused drill targeting.
- **Upcoming Fieldwork:** March soil sampling and AGES-linked fieldwork will refine drill targets across Beryllia, Columbia and Wilsons Find while advancing prospectivity.
- **IPO Update:** advancing broker discussions steps toward a late 2026 West Arunta IPO while continuing active exploration.



this issue

- Beginning of 2026 P.1
- 2026 Planning Workshop P.1
- Latest Beryllia Assays P.2
- Columbia gravity survey P.2
- Upcoming Field Work P.3
- IPO Update P.3

2026 Begins!

Beginning of 2026

URO entered 2026 with strong momentum, kicking off the year with a full-day strategy and planning workshop that sharpened project priorities and aligned the team around the goal of delivering a Tier-1-scale discovery. Building on newly acquired geophysical surveys and geochemical results, the team is actively interpreting data and advancing plans for targeted field programs, additional geophysics and, critically, drilling. In parallel, the commercial workstream is well underway, with preparation of offer documents to support the planned listing of URO's highly prospective West Arunta tenements.

2026 Planning Workshop and goals for the year

In 2026, URO is focused on delivering a successful IPO of its West Arunta asset portfolio, underpinned by drill-ready, high-quality projects, while continuing to build longer-term value across its private portfolio through disciplined, low-cost exploration.

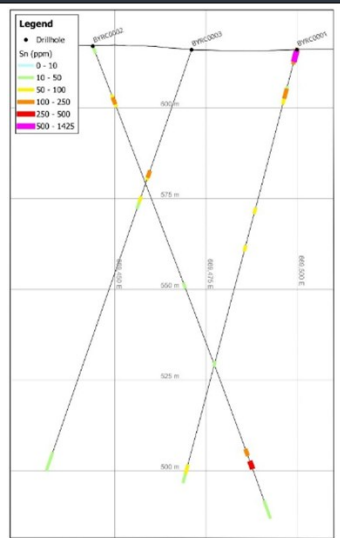
The listed entity will include the technically advanced Wilson's Find tungsten-copper prospect and the Beryllia tin-tungsten-beryllium-fluorine prospect, which together form the flagship critical minerals platform. These projects are being advanced toward clear post-IPO drilling decisions through targeted geochemistry, geophysical analysis and integrated geological mapping.

More mature projects, including the Southwark Shear Zone (REEs, kaolin and tin), may be progressed toward resource drilling, while newer opportunities such as Columbia will be systematically assessed for niobium and broader critical mineral potential. In parallel, URO's private portfolio will advance several highly prospective rare earth and base metal opportunities through geophysics, desktop studies and field work, positioning these assets for future partnerships or value crystallisation.

Overall, the 2026 plan is designed to deliver a compelling IPO supported by near-term geophysical survey acquisition, drilling momentum and a robust pipeline of growth opportunities beyond listing.



Copper rich quartz veins at Columbia



Beryllia RC holes with high Tin



2025 RC Drilling at Beryllia



Fluorite mineral at Beryllia

Latest Beryllia Assay Results and interpretations

URO has received additional assay results from the September 2025 Beryllia RC drilling campaign. Assay results from the initial drilling confirm the presence of a robust, multi-phase granite-related hydrothermal system with significant tin and fluorite mineralisation. Shallow, high-grade tin was intersected in greisenised granite, with standout results including up to **1,425 ppm Sn** from 0–3 m in hole BYRC001, demonstrating strong near-surface tin enrichment. Additional anomalous tin intersections across multiple drillholes confirm that greisen-hosted tin mineralisation is widespread rather than confined to a single structure, validating surface mapping and reinforcing the project’s tin prospectivity.

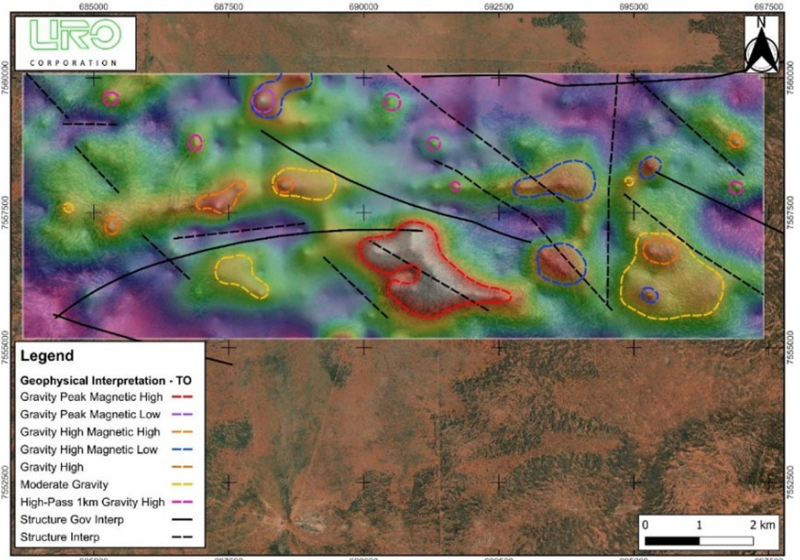
Drilling also confirmed a vertically extensive fluorite system, with multiple quartz–fluorite veins intersected at depth and assays returning very high fluorine grades, including up to **28.1% F**. Importantly, high-grade fluorite was intersected both within mapped surface veins and in areas lacking surface expression, highlighting the scale and continuity of fluorine-rich fluids across the system. Localised primary sulphide mineralisation with elevated copper values (up to **1,315 ppm Cu**) was also intersected, indicating a structurally controlled sulphide component within the broader mineral system and supporting potential metal zonation.

Columbia gravity survey results and initial interpretations

URO is applying a WA1-style exploration strategy to the Columbia prospects, using gravity (rock density) and magnetics to target dense bodies that may represent carbonatite intrusions capable of hosting large critical mineral systems. A ground gravity survey completed in December 2025 by Atlas Geophysics identified multiple gravity-high anomalies across the project area. These are interpreted to reflect a mix of dense magnetic and dense weakly magnetic intrusive sources, structurally controlled by a dominant early east–west grain and later northwest–southeast faulting that locally offsets earlier features.

Preliminary interpretation has defined priority target zones, which will now be refined through unconstrained 3D gravity inversion and integrated reprocessing of magnetic, radiometric and elevation datasets by Resource Potentials. This next phase of work will better constrain the depth, geometry and continuity of the gravity sources, sharpen drill targeting, and deliver robust, IPO-grade geophysical imagery for future planning.

URO’s new ground gravity survey with prospective targets





Mining News

- Project Vault aims to counter China's mineral supply chain chokepoints by creating a flexible U.S. critical minerals reserve. Click here: t.co/jlxwCLWutG
- Copper prices may need to double to avoid a looming supply crisis that could stall global development and the clean energy transition. From Robert Friedland's post. Click here: t.co/1Gw6p4g0Gg
- Trump's mining boom faces a stark reality: the U.S. is graduating just 300 mining engineers a year—far short of what's needed to power his critical minerals revolution. Click here: [Ripple by The Washington Post](https://www.washingtonpost.com)
- The Fed Is Fighting Inflation — And Losing the Industrial War. Western central banks' inflation focus is eroding strategic industry, while China funds long-term capacity and gains power. Click here: x.com/ctindale/status...

Exchange Tower
Suite 707, 530 Little Collins Street
Melbourne VIC 3000
AUSTRALIA

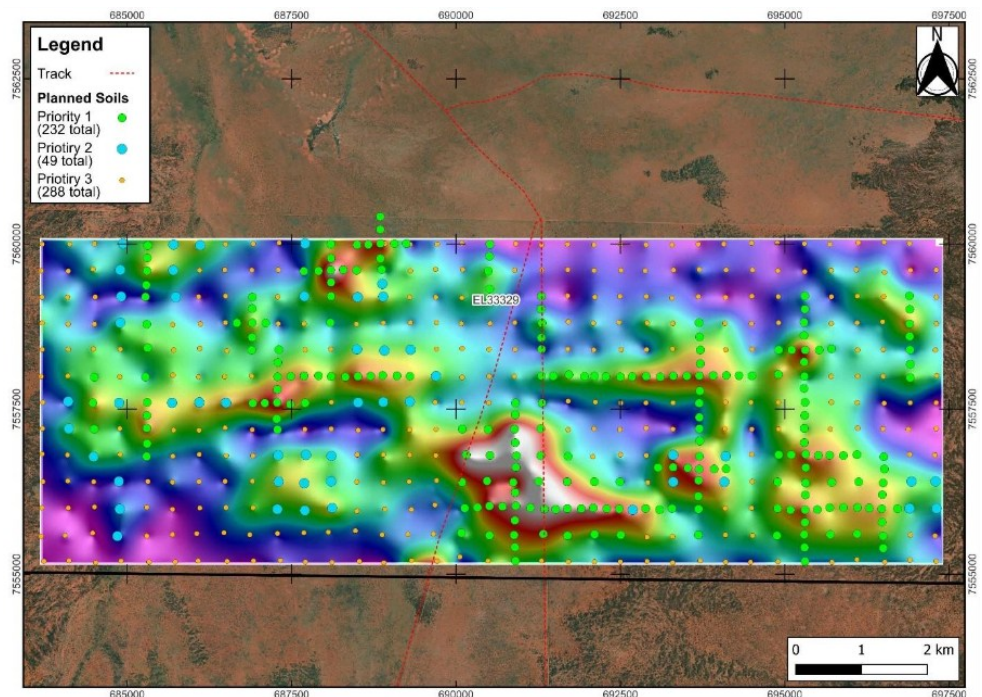
+61 (3) 9690 1500 ph
+61 (3) 9690 1544 fax
www.urocorp.com.au



Follow us on LinkedIn

Upcoming AGES and field work

URO has several fieldwork and conference activities planned over the coming months. In April, the team will attend the AGES conference in Alice Springs, followed by fieldwork in both the West Arunta and Charley Creek tenements. In Charley Creek the program will focus on the Hann Range, Glen Helen, and newly pegged Hamilton Downs prospects. While at West Arunta, a soil and rock-chip motorbike sampling campaign will be undertaken, targeting the Beryllia and Columbia North projects. At Columbia North, soil sampling will be undertaken over gravity anomalies defined by the recent gravity survey (see plan below). This area has seen very limited historical sampling and is expected to provide valuable new targeting information. The program will also include limited soil profiling over known chargeability anomalies at Wilsons Find. At Beryllia, soil sampling will focus on previously untested areas to infill gaps and refine targeting of potential greisen systems. The sampling will be complimented by geological mapping in gaps of both project areas.



URO's new ground gravity survey proposed field sampling areas

IPO update

URO has made solid progress toward the listing of its 3,500 km² West Arunta asset portfolio, with the company in discussions with a number of brokers/advisers to assist in the delivery of an Initial Public Offering. Our discussions continue to progress positively, and subject to broker appointment, legal review and ASIC/ASX processes, the company is targeting a listing later in the year. In parallel, exploration and value-building activities are continuing across the company's portfolio with obvious focus on the West Arunta assets.